

# MONTHLY MEMBERSHIP PROGRESS REPORT

LOCATION MAINE

District 41

Results as of: 6/30/2023

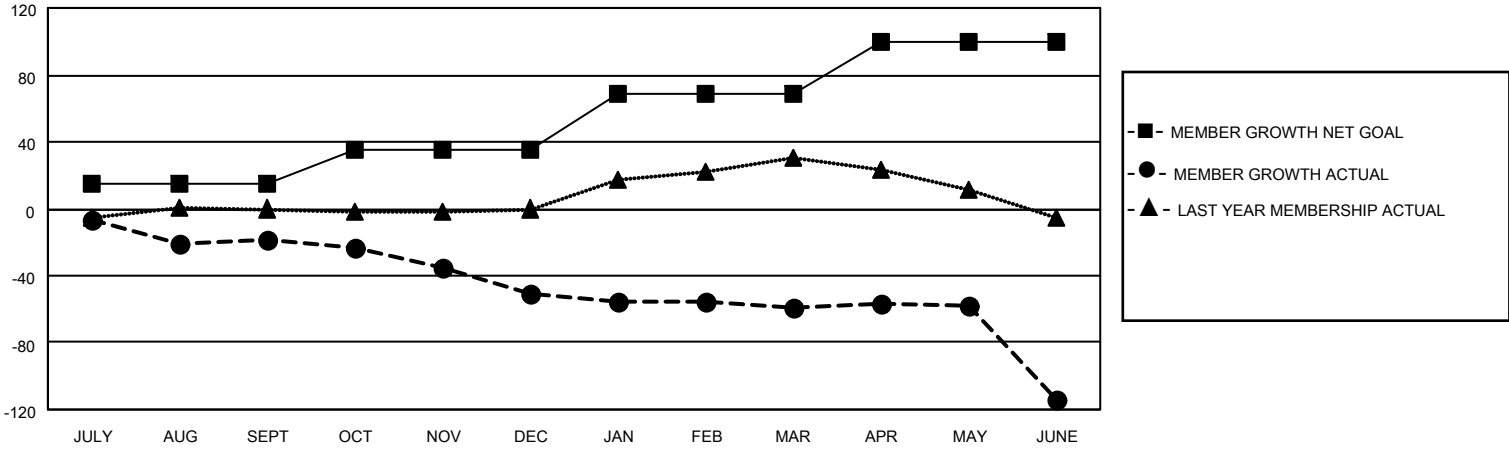
Clubs			
RESULTS FOR 2022-2023			
QUARTER	NEW CLUB GOAL	NEW CLUBS	DROPPED CLUBS
JULY/AUG/SEPT	0	0	0
OCT/NOV/DEC	0	0	0
JAN/FEB/MAR	0	0	2
APR/MAY/JUNE	0	0	1

Members			
RESULTS FOR 2022-2023			
QUARTER	MEMBER GROWTH NET GOAL	MEMBER GROWTH ACTUAL	DROPPED MEMBERS ACTUAL (including transfers)
JULY/AUG/SEPT	15	32	47
OCT/NOV/DEC	20	57	76
JAN/FEB/MAR	34	48	51
APR/MAY/JUNE	31	50	96

**GOALS AND ACTUAL NEW CLUBS CUMULATIVE**



**GOALS AND ACTUAL MEMBERS CUMULATIVE**



DROPPED CLUBS: 3	
<b>DROPPED MEMBERS</b>	
DECEASED	42
CLUB CANCELLED	15
OTHER	213
<b>TOTAL</b>	<b>270</b>

44 CLUBS OF 72 ADDED 1 OR MORE NEW MEMBERS

[CLICK HERE FOR CUMULATIVE MEMBERSHIP DATA](#)

<u>GENDER DISTRIBUTION</u>	
MALE	1,202 (64.48%)
FEMALE	662 (35.52%)
NON BINARY	0 (0.00%)
PREFER NOT TO ANSWER	0 (0.00%)
TOTAL FAMILY UNIT MEMBERS 437	
FAMILY MEMBERS PAYING HALF DUES 226	